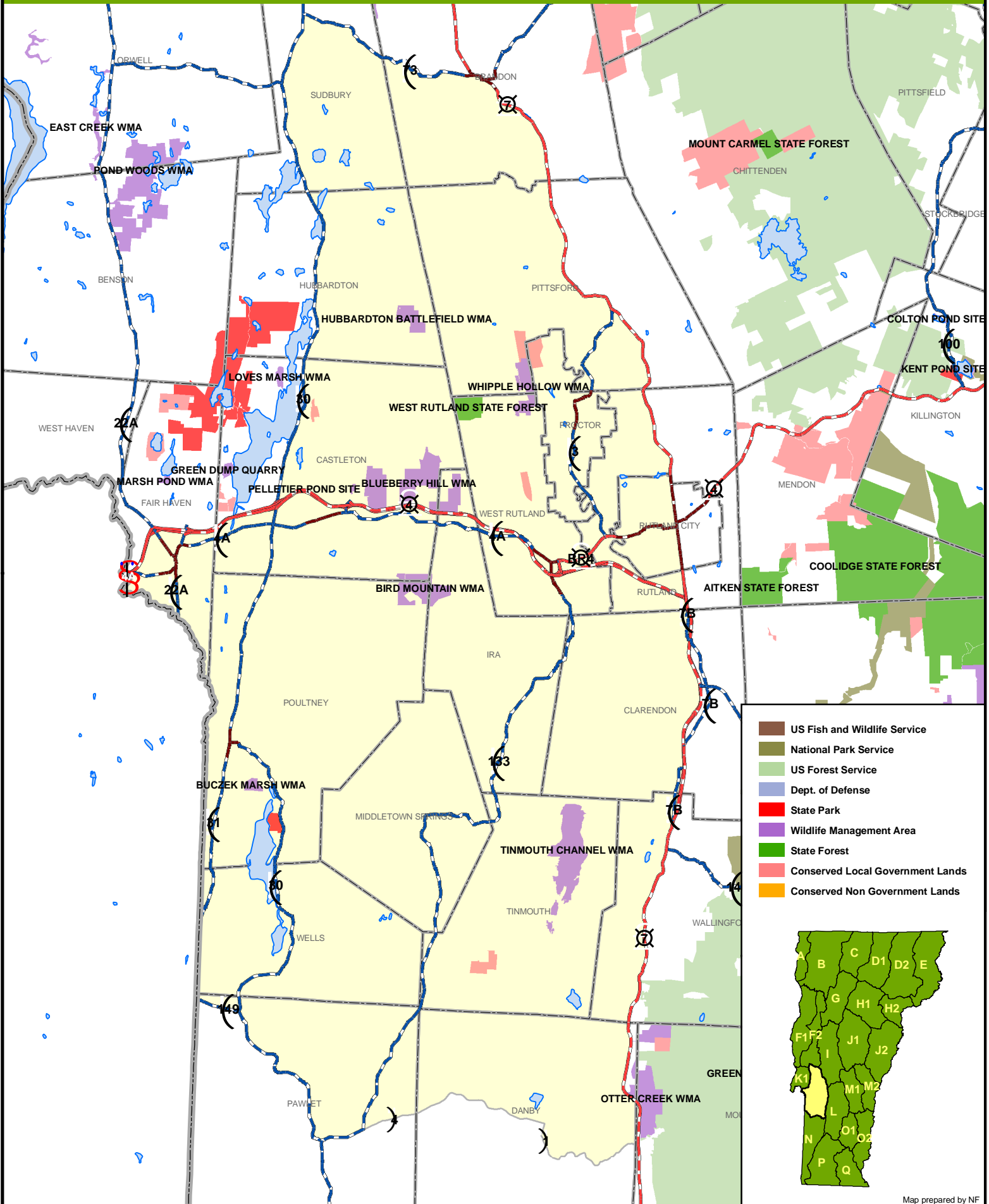
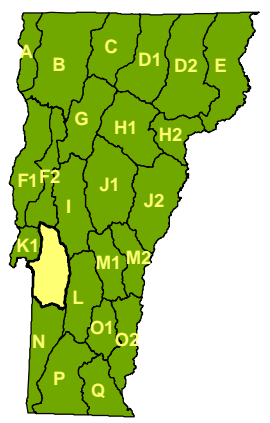


WILDLIFE MANAGEMENT UNIT K2



- US Fish and Wildlife Service
- National Park Service
- US Forest Service
- Dept. of Defense
- State Park
- Wildlife Management Area
- State Forest
- Conserved Local Government Lands
- Conserved Non Government Lands



Map prepared by NF

Boundaries of conserved lands are approximate. This map and the information on it should be used for planning purposes only.