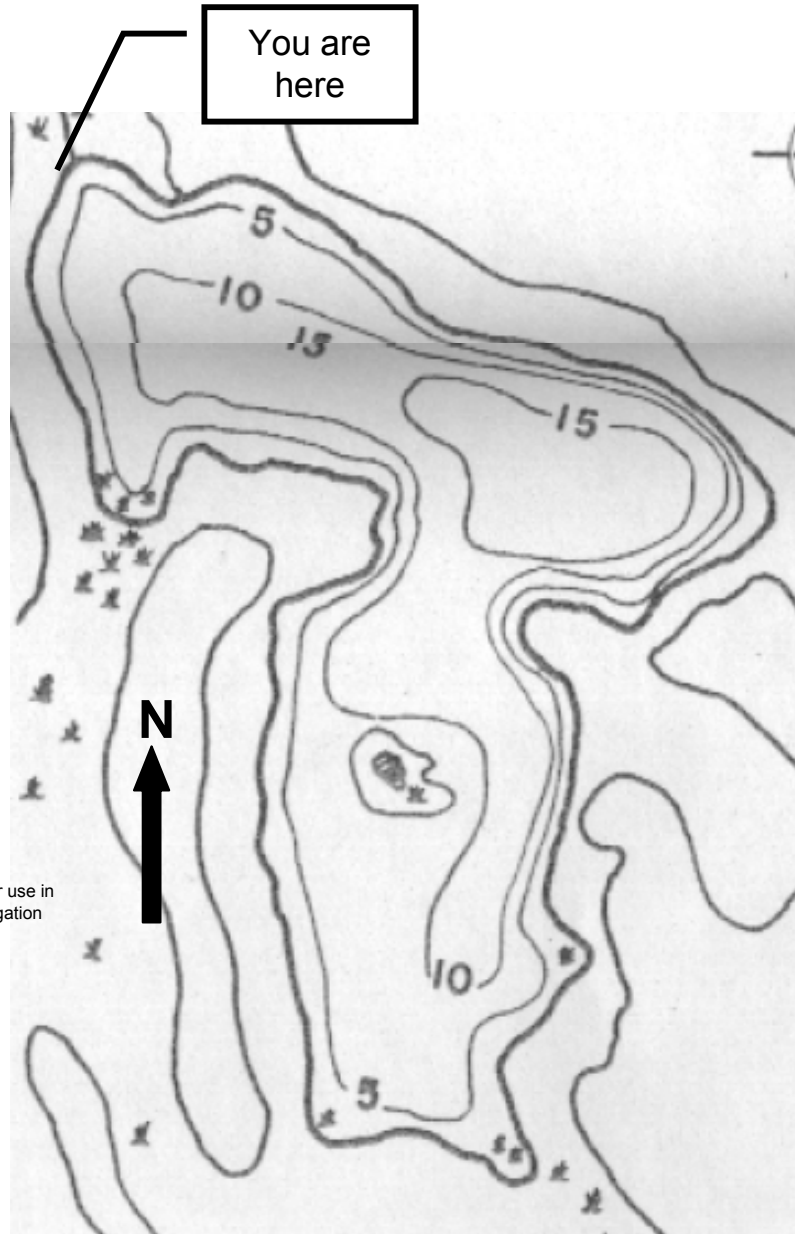




Spectacle Pond



Open to fishing year-round.



Species	Length Rules	Daily Limit	Legal Methods	Open Seasons
Brook Trout, Brown Trout, Rainbow Trout	None	Total of brook + brown + rainbow = no more than 6	Angling	2 nd Saturday in April to Oct. 31
Largemouth and Smallmouth Bass (catch and release season)	None	0	Catch and release angling with artificial lures and flies only	2 nd Saturday in April to Friday before 2 nd Saturday in June
Largemouth and Smallmouth Bass (regular season)	10"	Total of largemouth + smallmouth bass = no more than 5	Angling	2 nd Saturday in June to Nov. 30
Yellow Perch	None	50	Angling, ice fishing	All year
Chain Pickerel, Bullhead, Rock Bass, Pumpkinseed	None	None	Angling, ice fishing	All year

All other species: Refer to Vermont Guide to Hunting, Fishing, and Trapping

Fish Species Targeted by Anglers at this Pond

Species	Relative Abundance
Rainbow Trout	Common
Largemouth Bass	Common
Smallmouth Bass	Rare
Yellow Perch	Abundant
Chain Pickerel	Common
Bullhead	Common
Rock Bass	Common
Pumpkinseed	Common

Not for use in navigation