

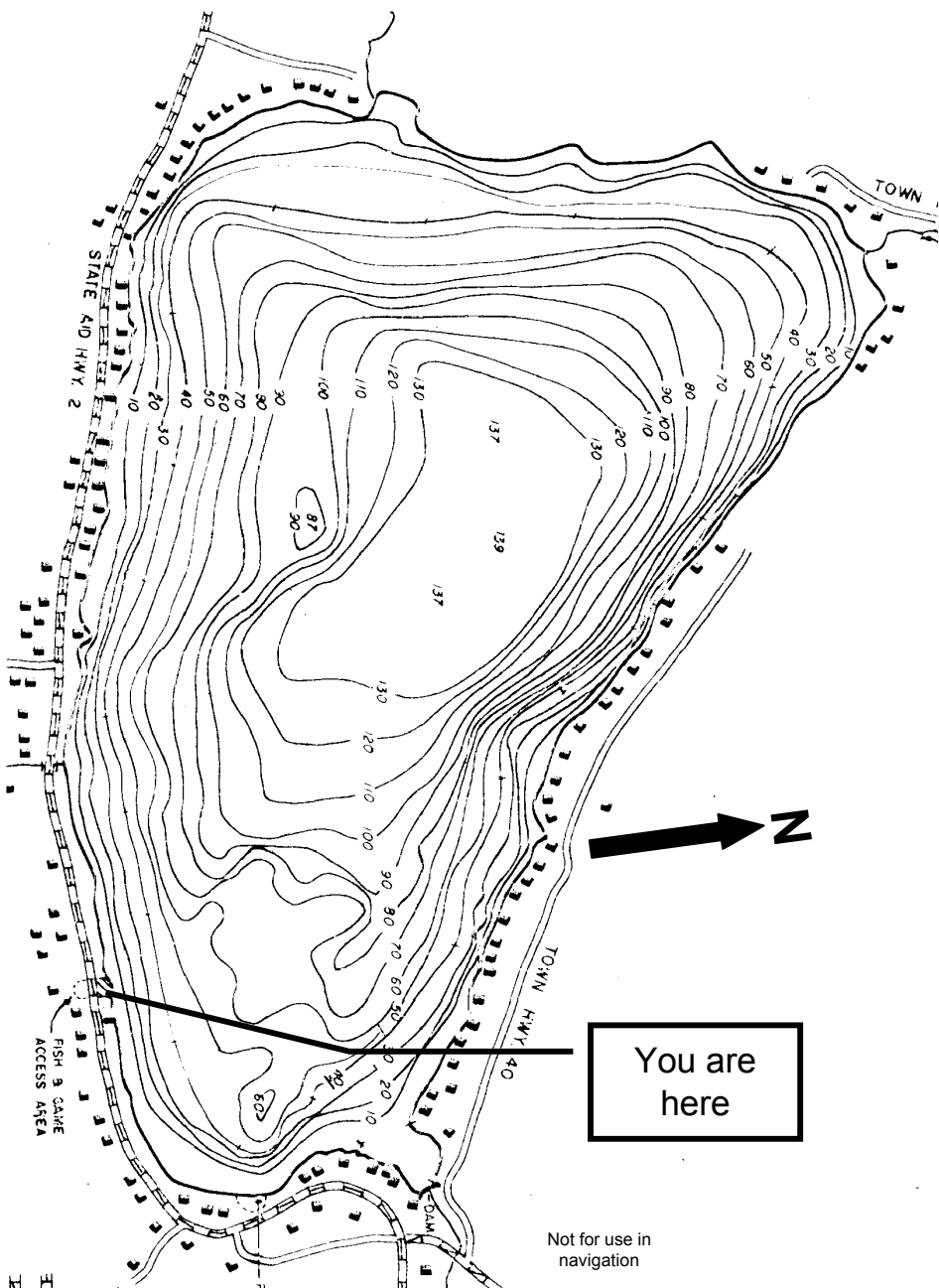


Shadow Lake



Openwater fishing from 2nd Saturday in April to October 31.

Ice fishing from 3rd Saturday in January to March 15.



Species	Length Rules	Daily Limit	Legal Methods	Open Seasons
Brook Trout, Brown Trout, Rainbow Trout	None	Total of brook trout + brown trout + lake trout + landlocked salmon = no more than 2	Angling, ice fishing	2 nd Saturday in April to Oct. 31 and 3 rd Saturday in Jan. to Mar. 15
Lake Trout	18"			
Landlocked Salmon	17"			
Largemouth and Smallmouth Bass (catch and release season)	None	0	Catch and release angling with artificial lures and flies only	2 nd Saturday in April to Friday before 2 nd Saturday in June
Largemouth and Smallmouth Bass (regular season)	10"	Total of largemouth + smallmouth bass = no more than 5	Angling, ice fishing	2 nd Saturday in June to Oct. 31 and 3 rd Saturday in Jan. to Mar. 15
Yellow Perch	None	50	Angling, ice fishing	2 nd Saturday in April to Oct. 31 and 3 rd Saturday in Jan. to Mar. 15
Smelt, Chain Pickerel, Bullhead, Pumpkinseed	None	None	Angling, ice fishing	2 nd Saturday in April to Oct. 31 and 3 rd Saturday in Jan. to Mar. 15

All other species: Refer to Vermont Guide to Hunting, Fishing, and Trapping

Fish Species Targeted by Anglers at this Pond

Species	Relative Abundance
Rainbow Trout	Common
Lake Trout	Common
Smallmouth Bass	Common
Chain Pickerel	Common
Yellow Perch	Abundant
Bullhead	Common
Pumpkinseed	Common