



# Lake Parker

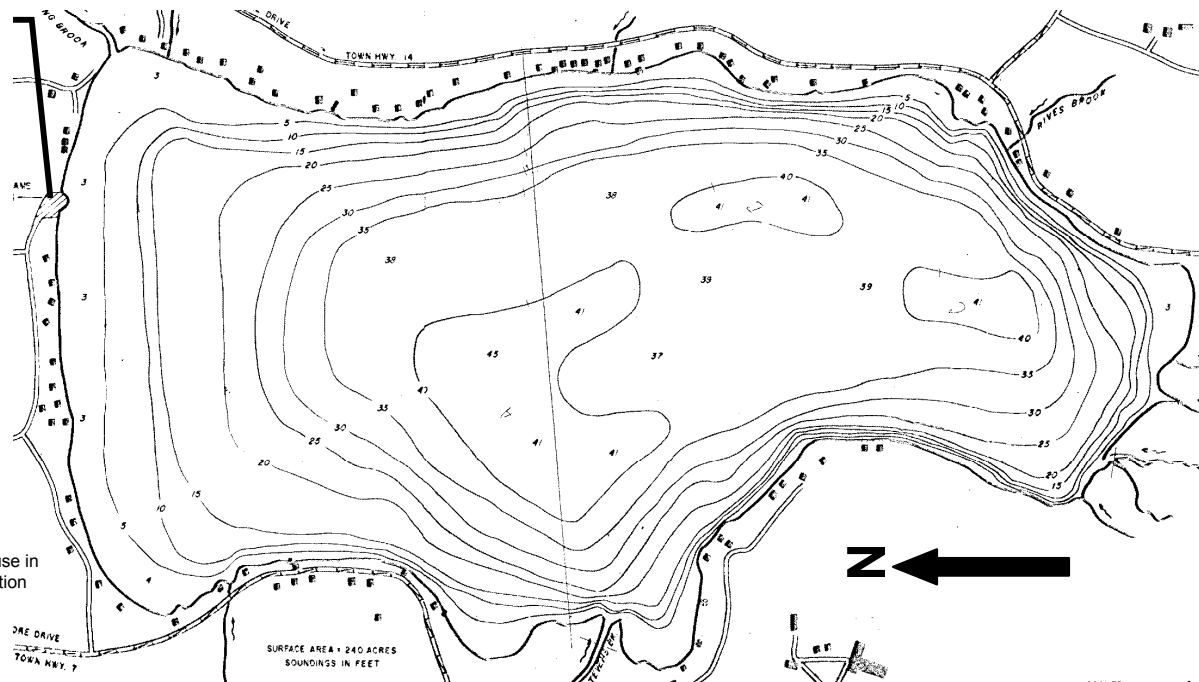


Open to fishing year-round.

Species	Length Rules	Daily Limit	Legal Methods	Open Seasons
Brook Trout, Brown Trout, Rainbow Trout	None	Total of brook trout+ brown trout + rainbow trout = no more than 6	Angling, ice fishing	2 <sup>nd</sup> Saturday in April to Oct. 31 and 3 <sup>rd</sup> Saturday in Jan. to Mar. 15
Largemouth and Smallmouth Bass (catch and release season)	None	0	Catch and release angling with artificial lures and flies only	2 <sup>nd</sup> Saturday in April to Friday before 2 <sup>nd</sup> Saturday in June
Largemouth and Smallmouth Bass (regular season)	10"	Total of largemouth + smallmouth bass = no more than 5	Angling, ice fishing	2 <sup>nd</sup> Saturday in June to Nov. 30 and 3 <sup>rd</sup> Saturday in Jan. to Mar. 15
Yellow Perch	None	50	Angling, ice fishing	All year
Smelt, Chain Pickerel, Bullhead, Pumpkinseed, White Perch	None	None	Angling, ice fishing	All year

You are here

Fish Species Targeted by Anglers at this Pond



Not for use in navigation

Species	Relative Abundance
Rainbow Trout	Common (spring)
Largemouth Bass	Common
Smallmouth Bass	Common
Yellow Perch	Abundant
Chain Pickerel	Common
Bullhead	Common
Pumpkinseed	Common
White Perch	Common