

Averill Mountain Wildlife Management Area

General Description

Averill Mountain Wildlife Management Area (WMA) is a 510-acre parcel of land owned by the State of Vermont and managed by the Vermont Fish & Wildlife Department. The WMA is located in the town of Norton, Vermont. It lies 2.8 miles east of Norton village on the north side of Route 114, and encompasses a large portion of Averill Mountain. It is bordered on three sides by private lands and its northern border is Canada.

Access to this WMA is by foot travel only, at the discretion of private landowners along Route 114. There is no legal right-of-way to this WMA.

History

Land use in the WMA has always been based in natural resource utilization. Principle uses were logging of forest products, hunting and trapping. John Cattier donated the land to the Vermont Fish & Wildlife Department in 1971.

Habitat Features

The summit of Averill Mountain is 2,200 feet in elevation; from it one can view Great Averill Pond and the surrounding mountainous countryside to the south. It is a steep and rocky site, forested with red maple, sugar maple, yellow birch, beech and ash. The south slope is extremely steep and has numerous small cliffs, crevices and small boulders.

A major ice storm in 1998 caused severe damage to nearly all trees in the WMA, stripping about half of the limbs from most of them. Although this natural disturbance killed some trees and left others with a pruned, misshapen appearance, it may benefit wildlife in several ways. More sunlight can reach the ground, so dense shrubs and young trees thrive in the new openings. These are used for food and cover by animals ranging from the tiny hermit thrush to moose. Snag-dependent wildlife will benefit from the numerous cavities formed in the living, dead and dying trees, and the abundant insects inhabiting them.

Common Fish and Wildlife

Mammals White-tailed deer, moose and black bear inhabit this WMA. Porcupines may find suitable dens in the many rocky cliffs and crevices. Signs of the more elusive carnivores are commonly found, including those of coyotes, bobcats and fishers.



Porcupines inhabit northern hardwood forests.
©Jupiter Images 2004.

Birds Raptors such as the goshawk, sharp-shinned, Cooper's and broad-winged hawk may frequent the area, along with great-horned and barred owl.

Many common species associated with northern hardwood forests, including hairy and downy woodpeckers, flycatchers, thrushes, and a variety of warblers breed on the area.

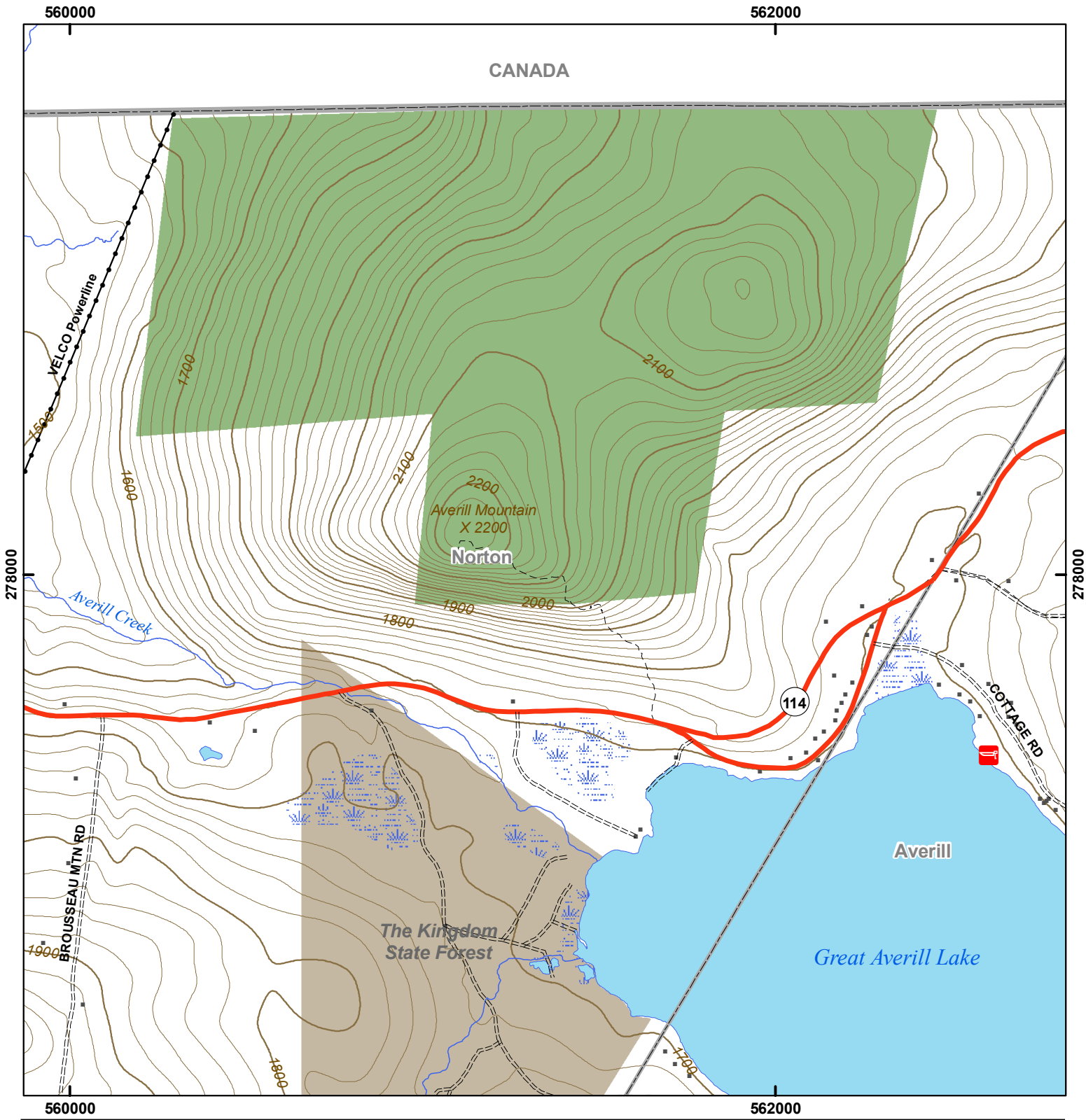
Reptiles and Amphibians Due to its relatively high elevation and lack of wetlands, the area provides terrestrial habitat suitable for only a few species. Northern red-bellied snake, northern ring-necked snake, and red-backed salamander may inhabit the hardwood forest.

Fish There are no fishable waters on this WMA.

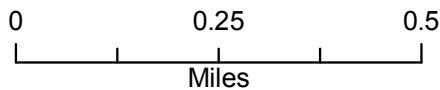


Vermont Fish & Wildlife Department

Averill Mountain Wildlife Management Area



Averill Mountain WMA: 510 acres



- Wildlife Management Area
- Other Public Land
- Private w/Public Access
- Wildlife Viewing Areas
- Car-top Access
- Parking
- Kiosk
- Boat Ramp
- Gate
- Designated camp site during Big Game Seasons only

This map is for illustrative purposes only. The accuracy of the data layers shown on this map are limited by the accuracy of the source materials. No warranty as to the accuracy or the usefulness of the data is expressed or implied.