



Vermont Fish & Wildlife Department

Wells River

Streambank Management Area

General Description

The Wells River originates in Groton, VT and flows eastward 15 miles before its confluence with the Connecticut River in its namesake village in Newbury, VT. Major tributaries of the Wells River include the North and South Branch, as well as Red Brook. The upper reaches, which lay primarily in Groton State Forest, are home to cold-water tributaries where anglers can target wild Brook Trout. Further downstream, Rainbow and Brown Trout can be found. Below the dam in Newbury, species such as Smallmouth Bass and Fallfish swim up from the Connecticut River.



Wells River at Wells River Access.

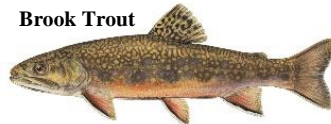
Potential Target Species

Rainbow Trout
Brook Trout
Smallmouth Bass
Fallfish

Smallmouth Bass



Brook Trout



Rainbow Trout



Fallfish



Fishing Regulations

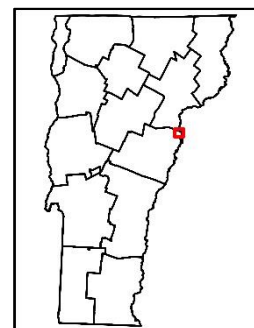
<https://www.eregulations.com/vermont/>



About Streambank Management Areas

Streambank Management Areas (SMAs) were purchased by the Vermont Fish & Wildlife Department to ensure access to the state's rivers for angling and other recreation, and to improve habitat for aquatic species.

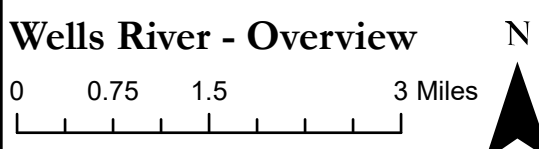
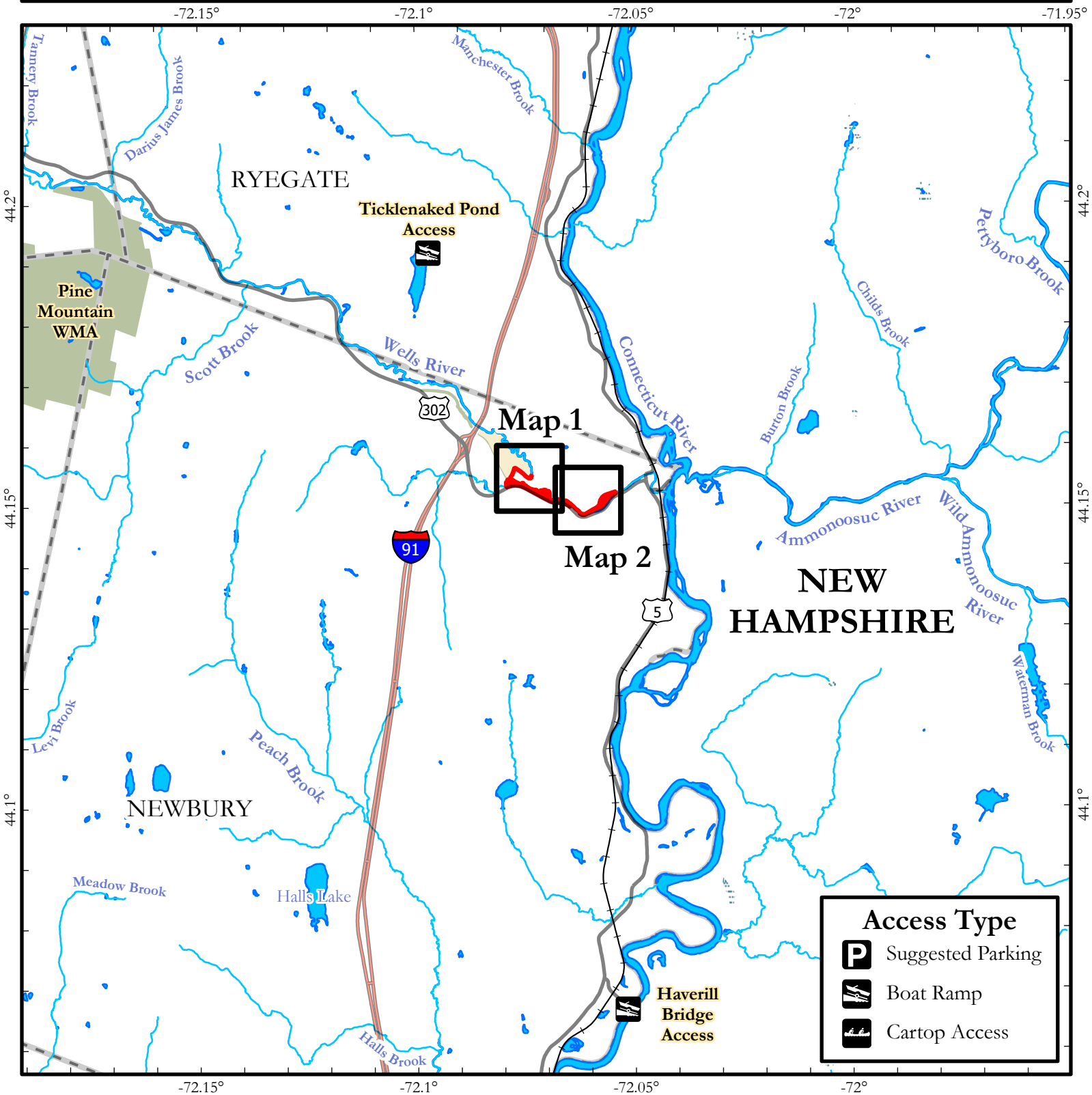
The following maps are for illustrative purposes only. No warranty as to the accuracy or the usefulness of the data is expressed or implied. The sign to the right indicates SMA lands.



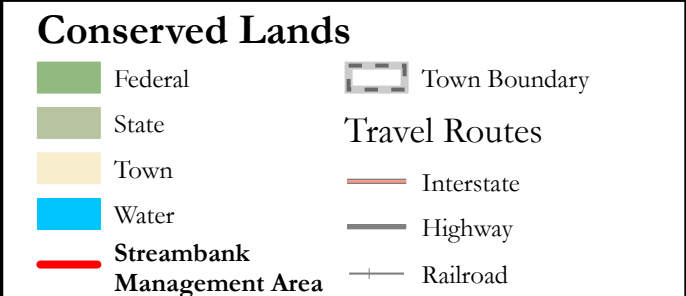
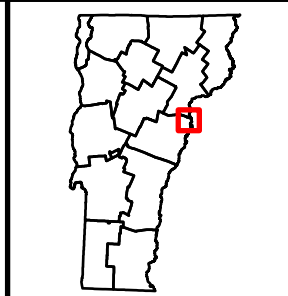
For more information regarding Wells River SMA, please contact the St. Johnsbury Fisheries office at: (802) 751-0100.

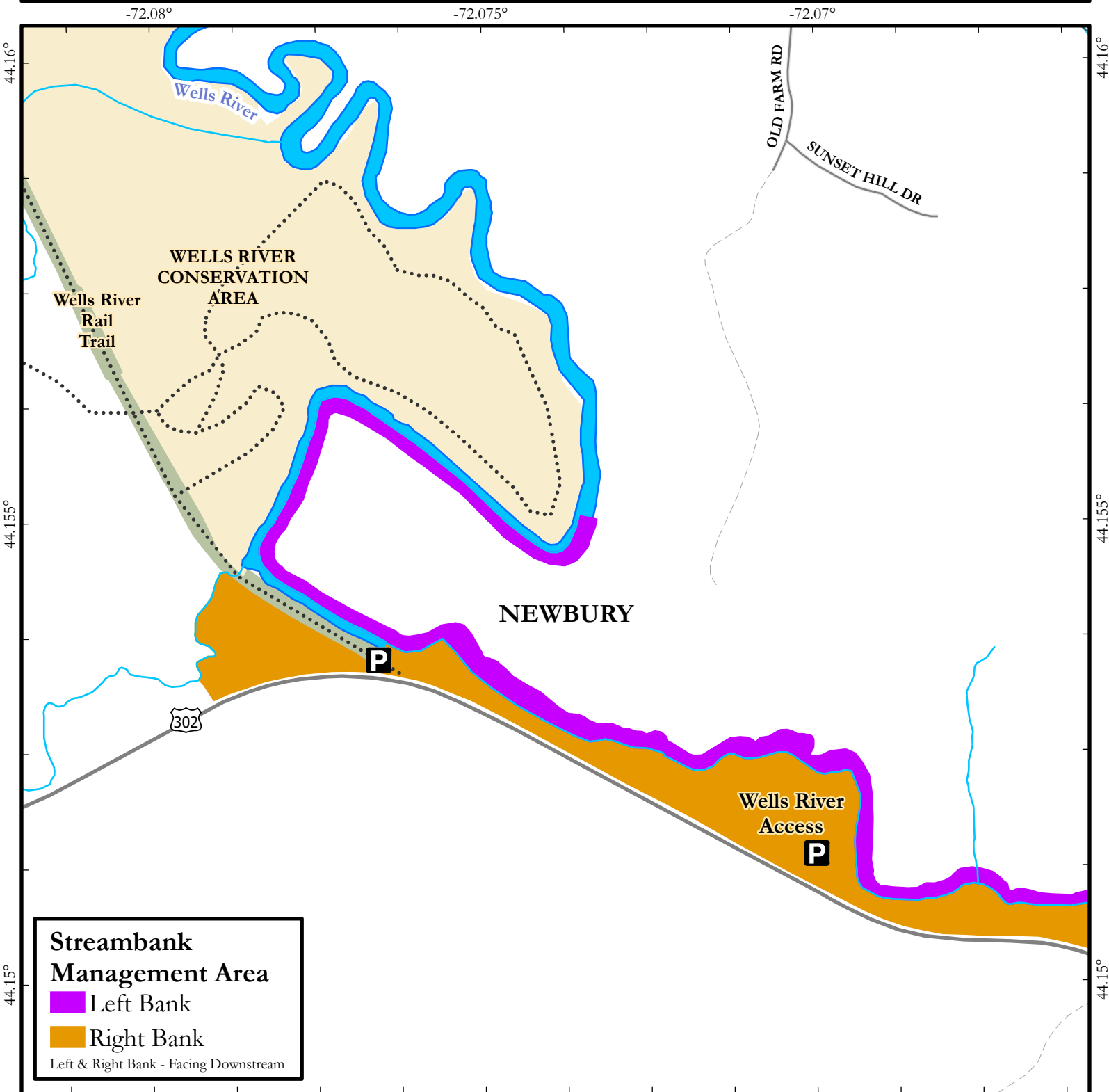
Stocking information for this river and other Vermont waterbodies: <https://anrweb.vt.gov/FWD/FW/FishStockingSearch.aspx>

Master Angler program info and entries from this river: <https://vtfishandwildlife.com/fish/fishing-events-and-programs/master-angler-program>



This map is for illustrative purposes only. The accuracy of the data layers shown on this map are limited by the accuracy of the source materials. No warranty as to the accuracy or the usefulness of the data is expressed or implied.





Streambank Management Area

- Left Bank
- Right Bank

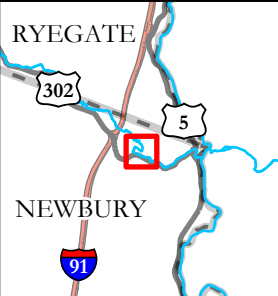
Left & Right Bank - Facing Downstream

Wells River - Map 1

0 250 500 1,000 Feet

N

This map is for illustrative purposes only. The accuracy of the data layers shown on this map are limited by the accuracy of the source materials. No warranty as to the accuracy or the usefulness of the data is expressed or implied.



Conserved Lands

- Federal
- State
- Town
- Water
- Town Boundary
- Foot Path
- Railroad
- Suggested Parking
- Cartop Access
- Boat Ramp

-72.065°

-72.06°

-72.055°

44.155°

44.155°

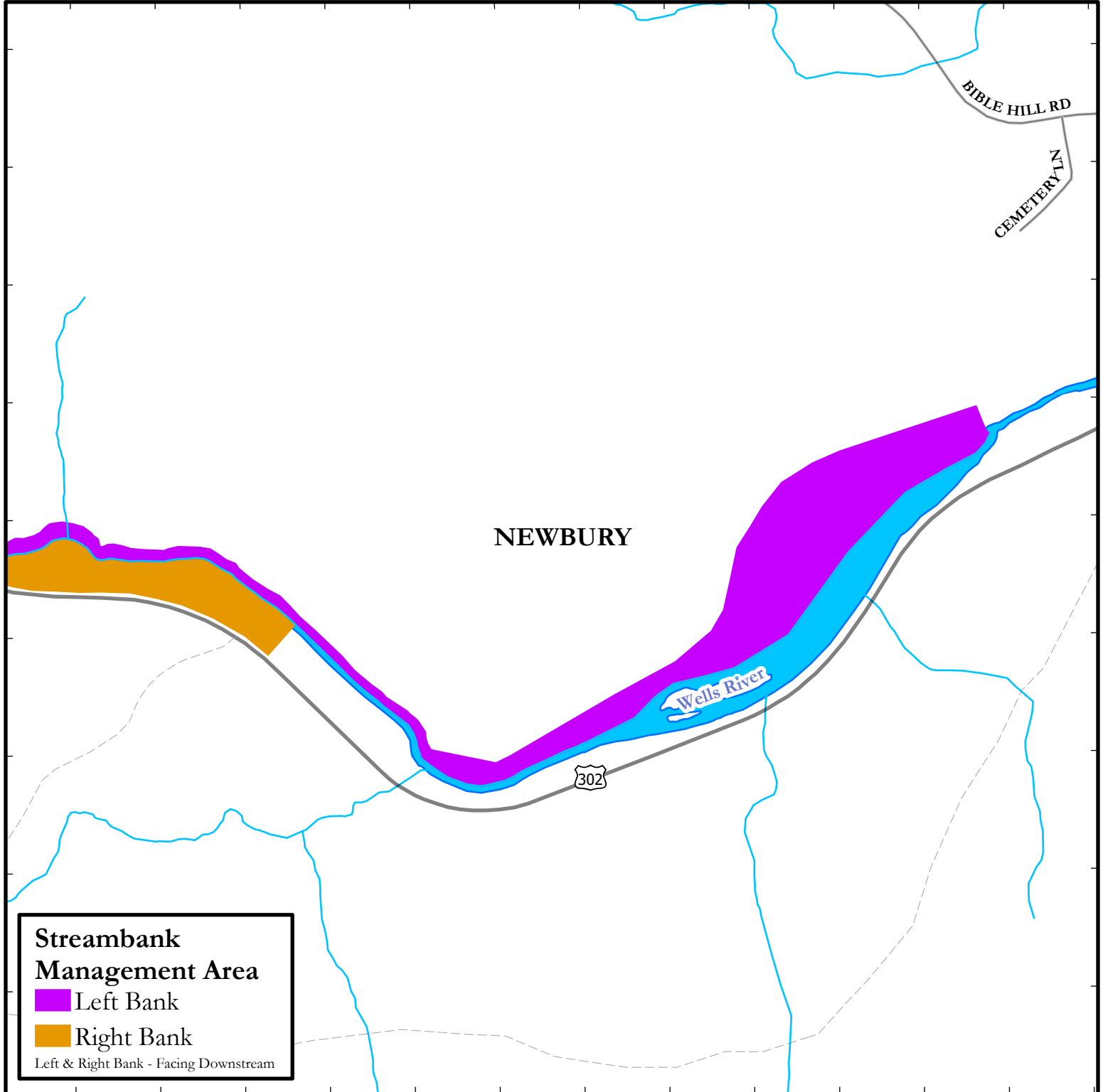
44.15°

44.15°

-72.065°

-72.06°

-72.055°

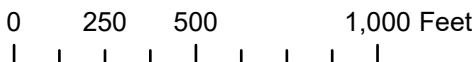


Streambank Management Area

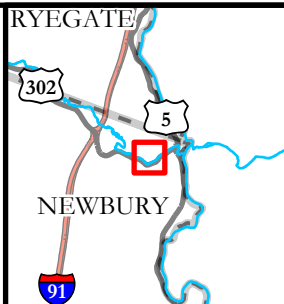
- Left Bank
- Right Bank

Left & Right Bank - Facing Downstream

Wells River - Map 2



This map is for illustrative purposes only. The accuracy of the data layers shown on this map are limited by the accuracy of the source materials. No warranty as to the accuracy or the usefulness of the data is expressed or implied.



Conserved Lands

- Federal
- State
- Town
- Water
- Town Boundary
- Foot Path
- Railroad
- Suggested Parking
- Cartop Access
- Boat Ramp