



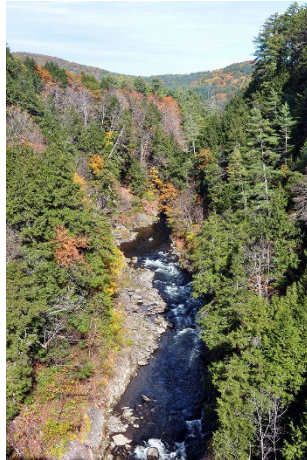
Vermont Fish & Wildlife Department

Ottauquechee River

Streambank Management Area

General Description

The Ottauquechee River flows from the slopes of Killington Mountain eastward towards its confluence with the Connecticut River in Hartland, VT. Along the way, the river passes through the heart of the Green Mountains and is responsible for shaping numerous natural wonders in the state, including the iconic Quechee Gorge. In the headwater reaches, where Ottauquechee River SMA is located, the river contains a coldwater fishery of Brook and Brown Trout, as well as White Sucker. Both parcels of the SMA, as well as Ottauquechee WMA further downstream, are perhaps best accessed by boat. Though not part of the SMA, further downstream the river is impounded by the North Hartland Dam, creating a reservoir fishery for Northern Pike, Largemouth Bass, Yellow Perch, and other species affiliated with lakes and ponds.



Fishing Regulations

<https://www.eregulations.com/vermont/>



About Streambank Management Areas

Streambank Management Areas were purchased by the Vermont Fish & Wildlife Department to ensure access to the state's rivers for angling and other recreation, and to improve habitat for aquatic species.

The following maps are for illustrative purposes only. No warranty as to the accuracy or the usefulness of the data is expressed or implied. The sign to the right indicates SMA lands.



Potential Target Species

Brook Trout
Brown Trout
White Sucker

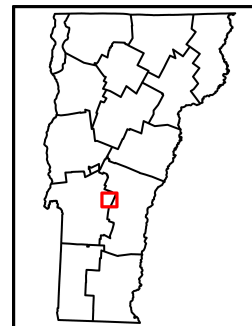
White Sucker



Brown Trout



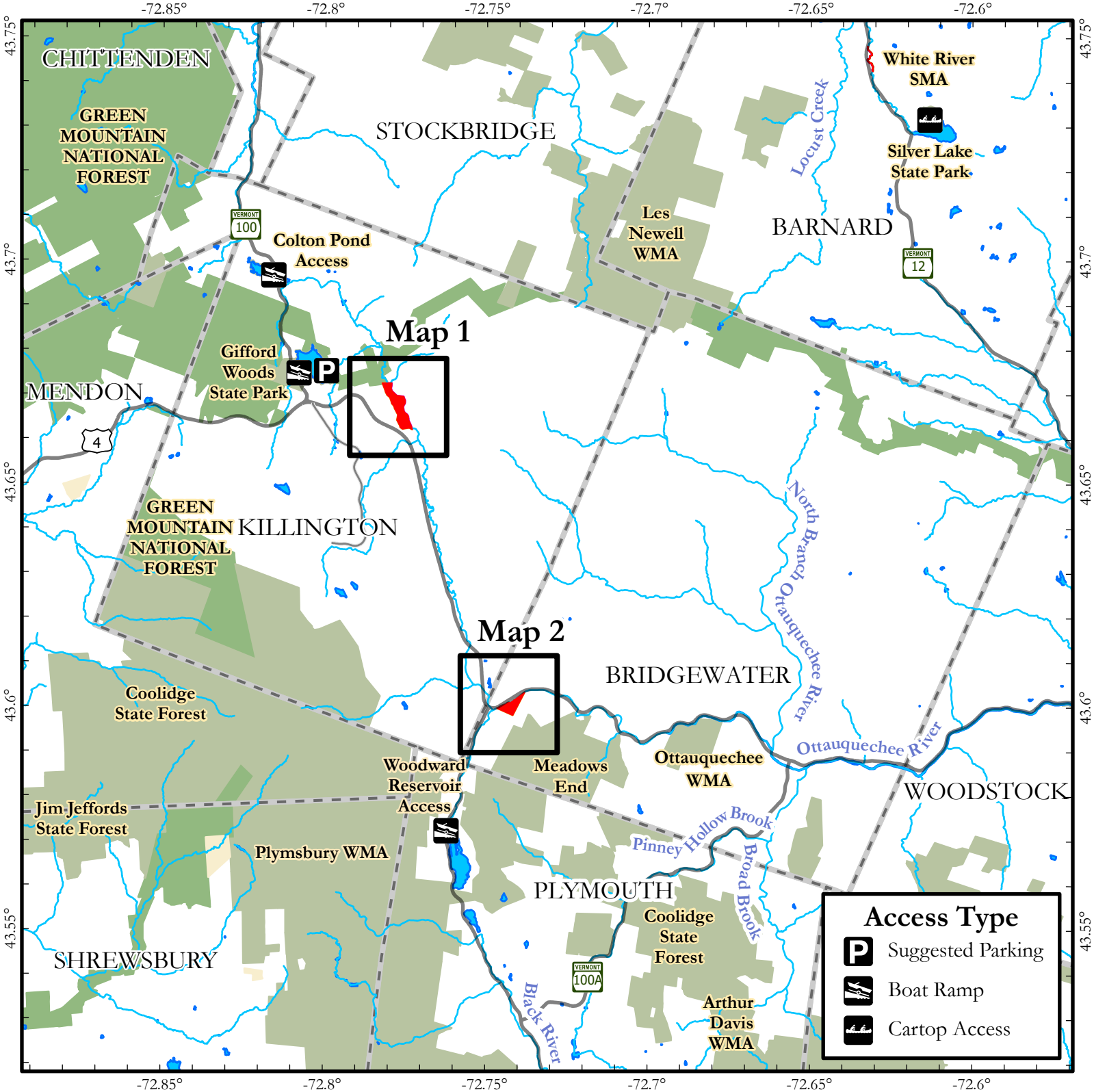
Brook Trout



For more information regarding Ottauquechee River SMA, please contact the Roxbury Fisheries office at (802) 485-7566.

Stocking information for this river and other Vermont waterbodies: <https://anrweb.vt.gov/FWD/FW/FishStockingSearch.aspx>

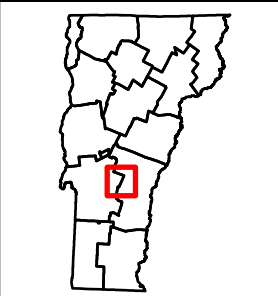
Master Angler program info and entries from this river: <https://vtfishandwildlife.com/fish/fishing-events-and-programs/master-angler-program>



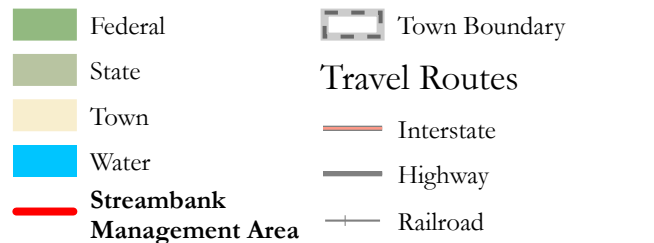
Ottawaquechee R. - Overview

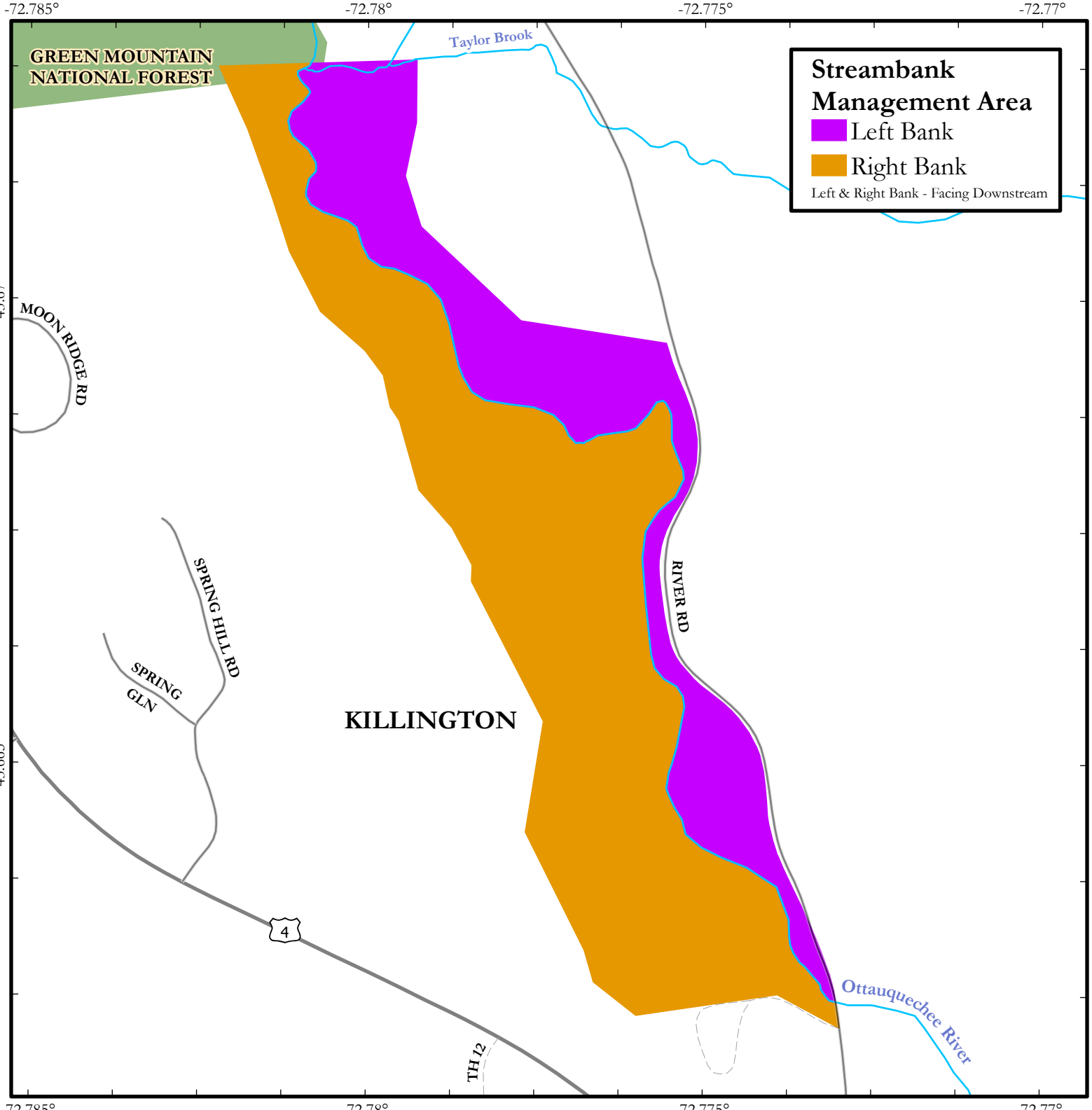


This map is for illustrative purposes only. The accuracy of the data layers shown on this map are limited by the accuracy of the source materials. No warranty as to the accuracy or the usefulness of the data is expressed or implied.



Conserved Lands





Streambank Management Area

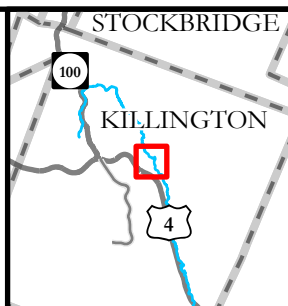
- Left Bank
- Right Bank

Left & Right Bank - Facing Downstream

Ottawaquechee R. - Map 1

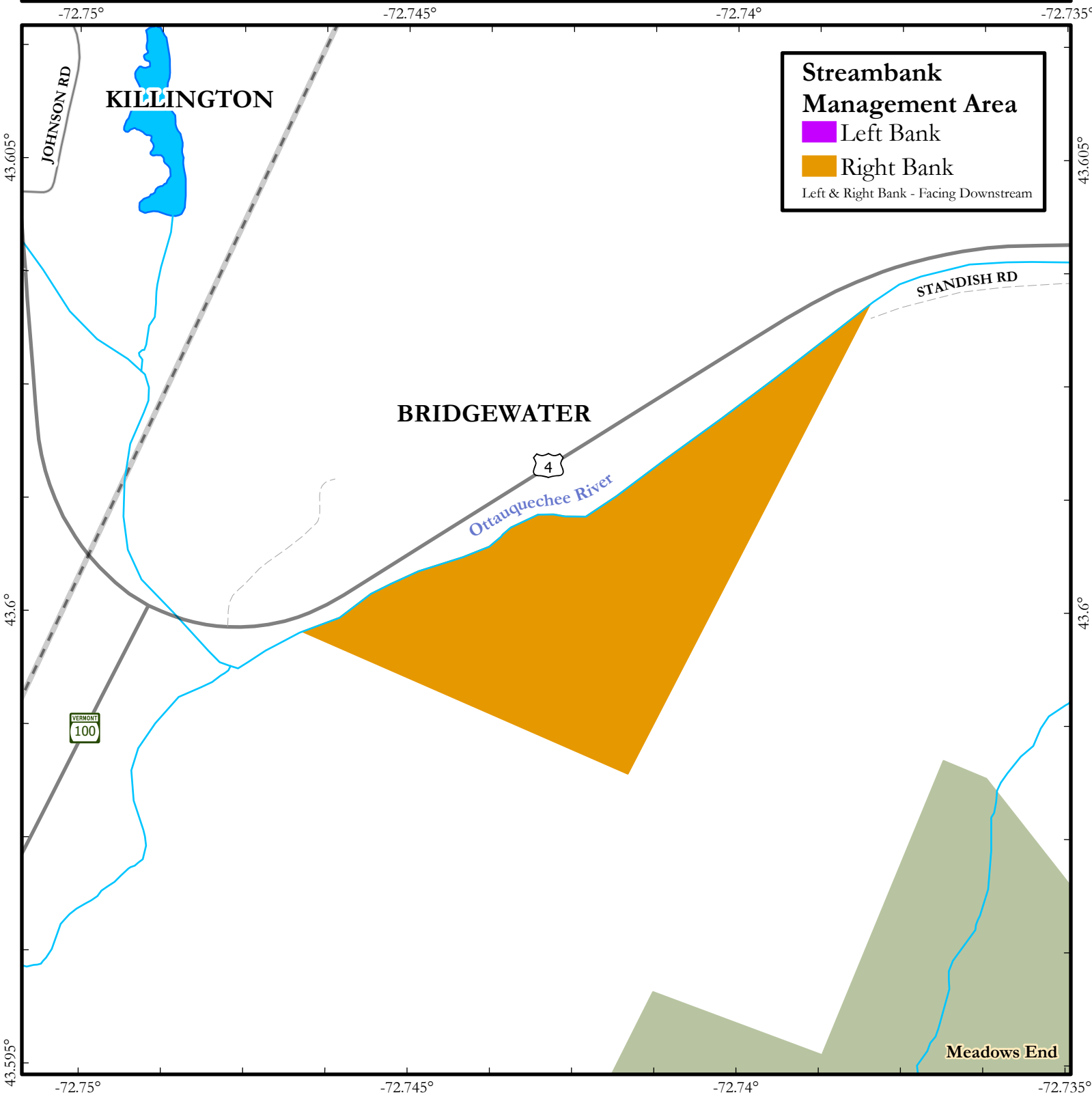
0 250 500 1,000 Feet

This map is for illustrative purposes only. The accuracy of the data layers shown on this map are limited by the accuracy of the source materials. No warranty as to the accuracy or the usefulness of the data is expressed or implied.

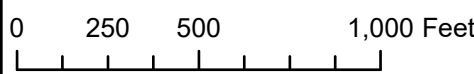


Conserved Lands

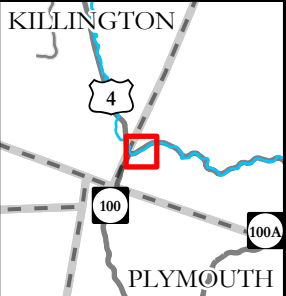
- Federal
- State
- Town
- Water
- Town Boundary
- Foot Path
- Railroad
- P Suggested Parking
- P Cartop Access
- P Boat Ramp



Ottawaquechee R. - Map 2



This map is for illustrative purposes only. The accuracy of the data layers shown on this map are limited by the accuracy of the source materials. No warranty as to the accuracy or the usefulness of the data is expressed or implied.



Conserved Lands

- Federal
- State
- Town
- Water
- Town Boundary
- Foot Path
- Railroad
- Suggested Parking
- Cartop Access
- Boat Ramp