



Vermont Fish & Wildlife Department

Lewis Creek

Streambank Management Area

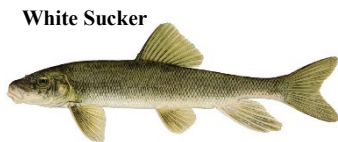
General Description

Lewis Creek, which runs across seven Vermont towns in Addison and Chittenden counties, is an important tributary to Lake Champlain. The lower reaches support a warmwater fishery, featuring important spawning habitat for Smallmouth Bass and other species. Above the falls in Ferrisburgh, waters cool and support wild fisheries of Brook, Brown, and Rainbow Trout. Lewis Creek SMA in Hinesburg and Monkton is part of this coldwater fishery. White Suckers are present in addition to the year-round resident trout, and during the spring, Steelhead migrate into the SMA all the way from Lake Champlain.



Potential Target Species

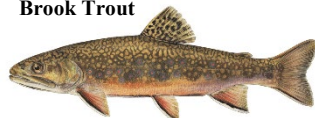
Steelhead/Rainbow Trout
Brown Trout
Brook Trout
White Sucker



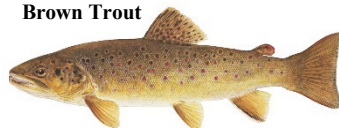
Steelhead



Brook Trout



Brown Trout



Fishing Regulations

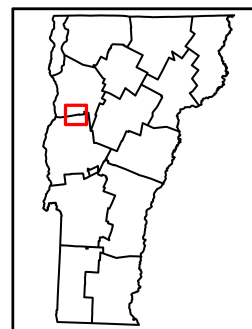
<https://www.eregulations.com/vermont/>



About Streambank Management Areas

Streambank Management Areas were purchased by the Vermont Fish & Wildlife Department to ensure access to the state's rivers for angling and other recreation, and to improve habitat for aquatic species.

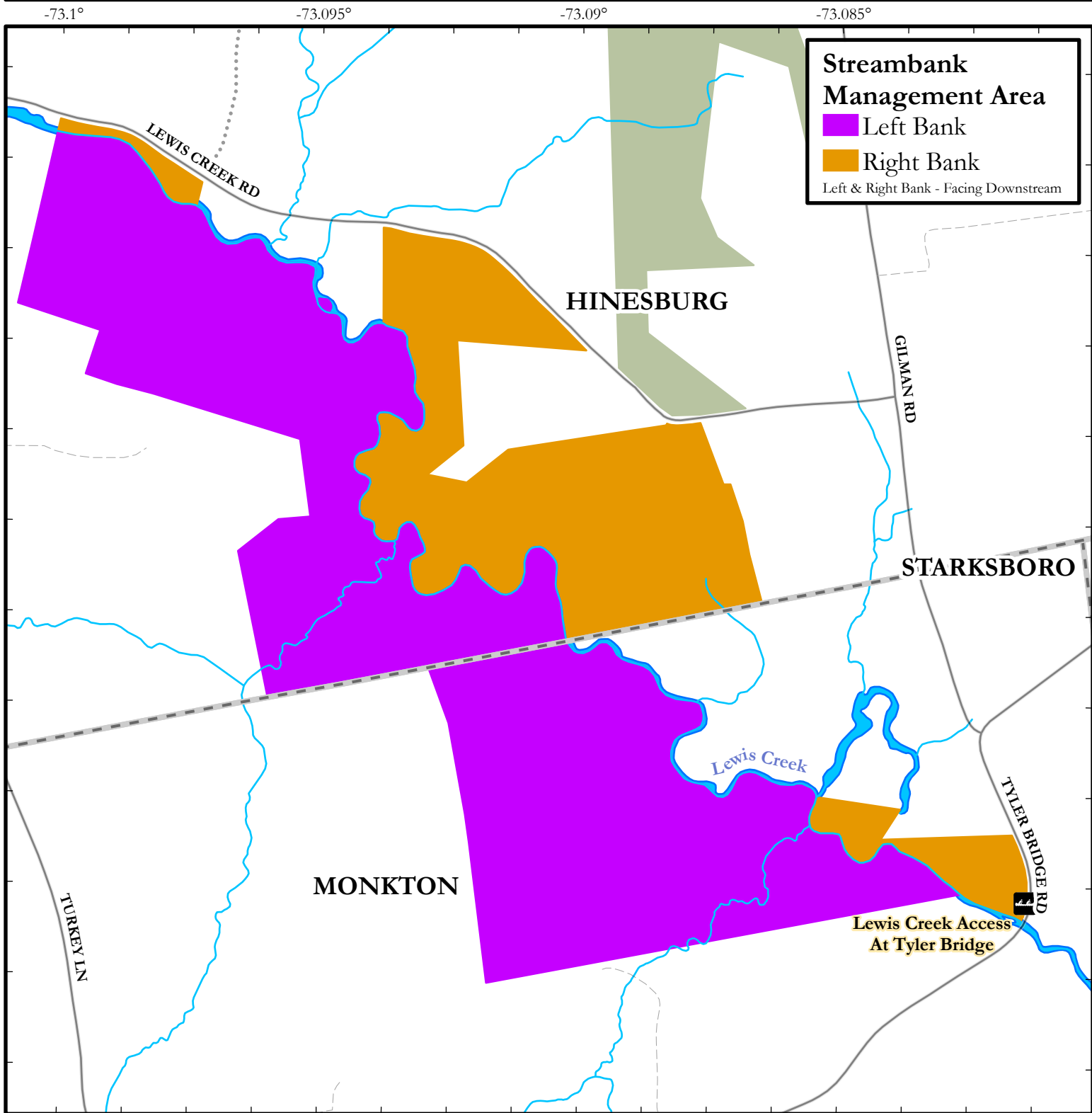
The following maps are for illustrative purposes only. No warranty as to the accuracy or the usefulness of the data is expressed or implied. The sign to the right indicates SMA lands.



For more information regarding Lewis Creek SMA, please contact the Essex Fisheries office at (802) 878-1564.

Stocking information for this river and other Vermont waterbodies: <https://anrweb.vt.gov/FWD/FW/FishStockingSearch.aspx>

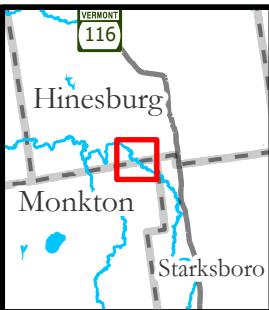
Master Angler program info and entries from this river: <https://vtfishandwildlife.com/fish/fishing-events-and-programs/master-angler-program>



Lewis Creek - Map 1

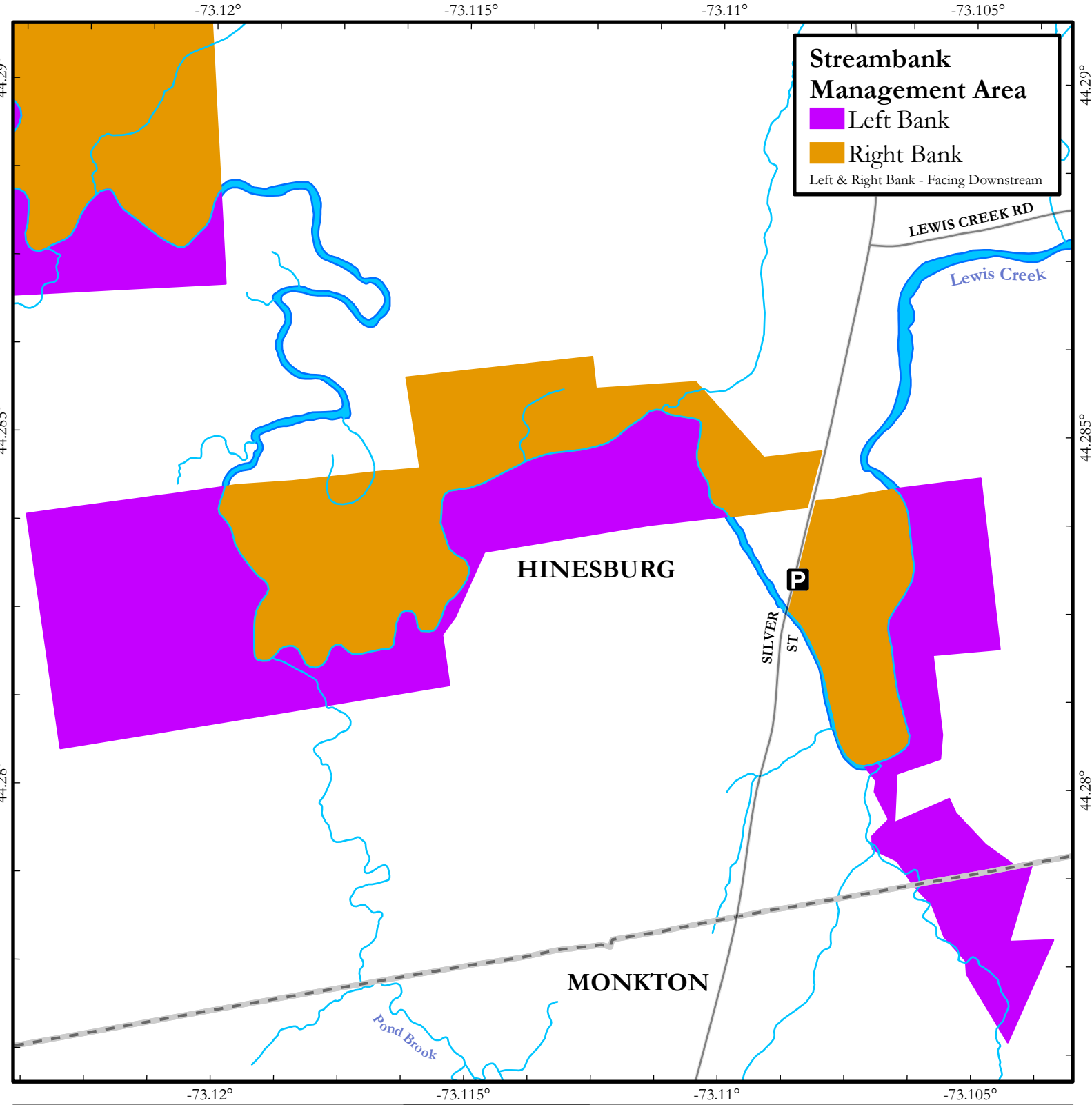
0 250 500 1000 Feet

This map is for illustrative purposes only. The accuracy of the data layers shown on this map are limited by the accuracy of the source materials. No warranty as to the accuracy or the usefulness of the data is expressed or implied.



Conserved Lands

- Federal
- State
- Town
- Water
- Town Boundary
- Foot Path
- Railroad
- P Suggested Parking
- P Cartop Access
- P Boat Ramp



Lewis Creek - Map 2

0 250 500 1000 Feet

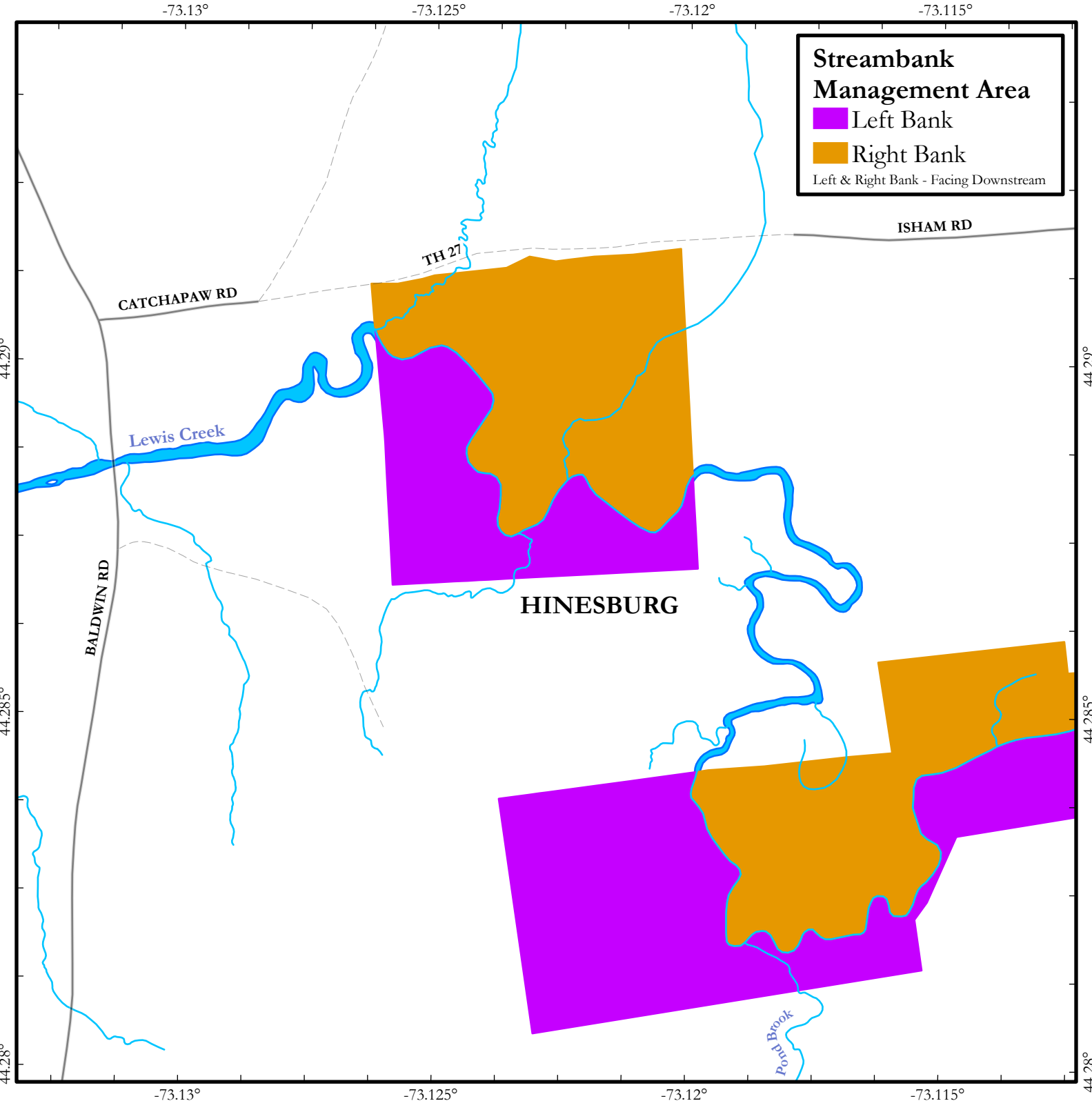


This map is for illustrative purposes only. The accuracy of the data layers shown on this map are limited by the accuracy of the source materials. No warranty as to the accuracy or the usefulness of the data is expressed or implied.



Conserved Lands

- Federal
- State
- Town
- Water
- Town Boundary
- Foot Path
- Railroad
- Suggested Parking
- Cartop Access
- Boat Ramp



Streambank Management Area

- Left Bank
- Right Bank

Left & Right Bank - Facing Downstream

Lewis Creek - Map 3

0 250 500 1000 Feet

This map is for illustrative purposes only. The accuracy of the data layers shown on this map are limited by the accuracy of the source materials. No warranty as to the accuracy or the usefulness of the data is expressed or implied.



Conserved Lands

- Federal
- State
- Town
- Water
- Town Boundary
- Foot Path
- Railroad
- P Suggested Parking
- P Cartop Access
- R Boat Ramp